

**R&R Manufacturing, Inc.**

30340 Runway Blvd. Pratt, KS 67124  
620-672-7461 [www.rrmanufacturing.com](http://www.rrmanufacturing.com)

# Overhead Conveyor

## QUALITY & DEPENDABILITY

304 Stainless Steel fabrication with high quality drive components.

## CONVENIENCE

Spanned over the length of the building for ease of completely filling each bin.

## HEAVY DUTY CONSTRUCTION

For a longer lasting life.

## STANDARD FEATURES

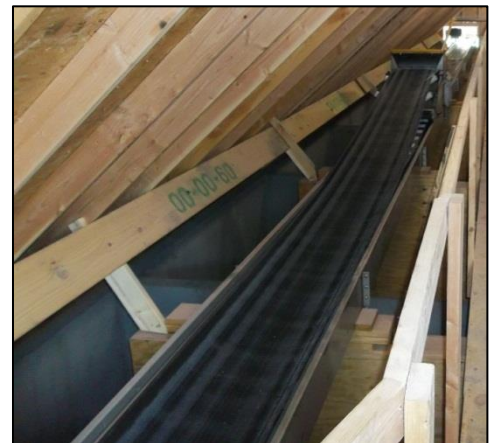
- \*18" or 24" Smooth top belting
- \*Premium Efficiency 3-phase electric motors
- \*Rubber lagged & crowned rollers
- \*Industrial grade bearings
- \*Grease packed take-ups
- \*Stainless Steel Gravity Tripper

## OPTIONS

- \*Stainless Steel Tripslinger
- \*Manual or Electric cable winch system



Overhead Conveyor with Gravity Tripper



*We reserve the right to change products and specifications at any time without notice. Images may or may not include optional equipment.*

**R&R**  
Manufacturing, Inc.